

USB DRIVER INSTALLATION MANUAL

Version: USB_Driver_Installation_Manual_v1.0

Figures

Figure 1: Select unknown device (IAR LPC2378).....	5
Figure 2: Right click to select update option.	6
Figure 3: Select manual installation.....	6
Figure 4: Select all devices.	7
Figure 5: Select Have Disk option.	7
Figure 6: Select appropriate driver file.	8
Figure 7: Driver file selected.	8
Figure 8: Warning message 1.....	9
Figure 9: Warning message 2.....	9
Figure 10: Driver installed.	10
Figure 11: End look after successful driver installation.	10

1 INTRODUCTION

For user to use GUI application on PC, one has to install USB driver to be able to connect to MARS GSM communication devices. The same USB driver is used for ZEUS4, SOLO, GSW ... devices.

The user has different drivers available for different OS, one is for Windows XP and one is for WINDOWS7 64bit.

2 OS DEPENDAND DRIVERS

User has to select appropriate driver for his OS. See table below.

Driver name	Windows XP	Windows7 32bit	Windows 7 64bit
iarvircomport.inf	x	x	
<i>iarvircomport_x64_v11.inf</i>			x

3 INSTALATION OF USB DRIVER ON WINDOWS 7

To install USB driver on WINDOWS 7, follow steps described in this chapter.

IMPORTANT

Select correct installation file for your Operating System!!

First connect MARS GSM communication device and PC with USB cable. PC will notify the user to install a USB driver. Right click on “IAR LPC2378” and select “**Select Driver Software**” option.

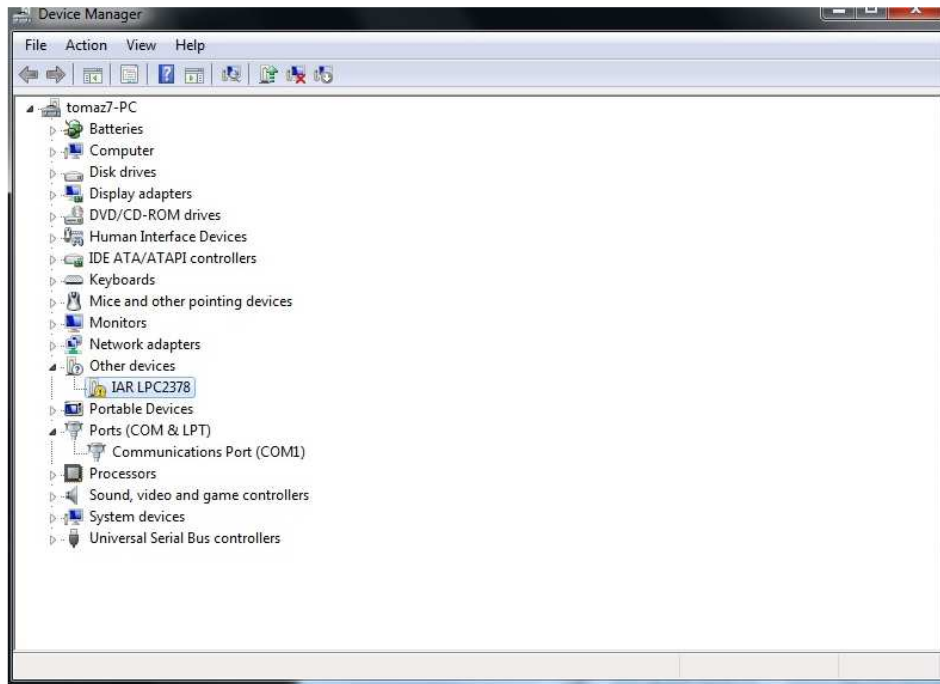


Figure 1: Select unknown device (IAR LPC2378).

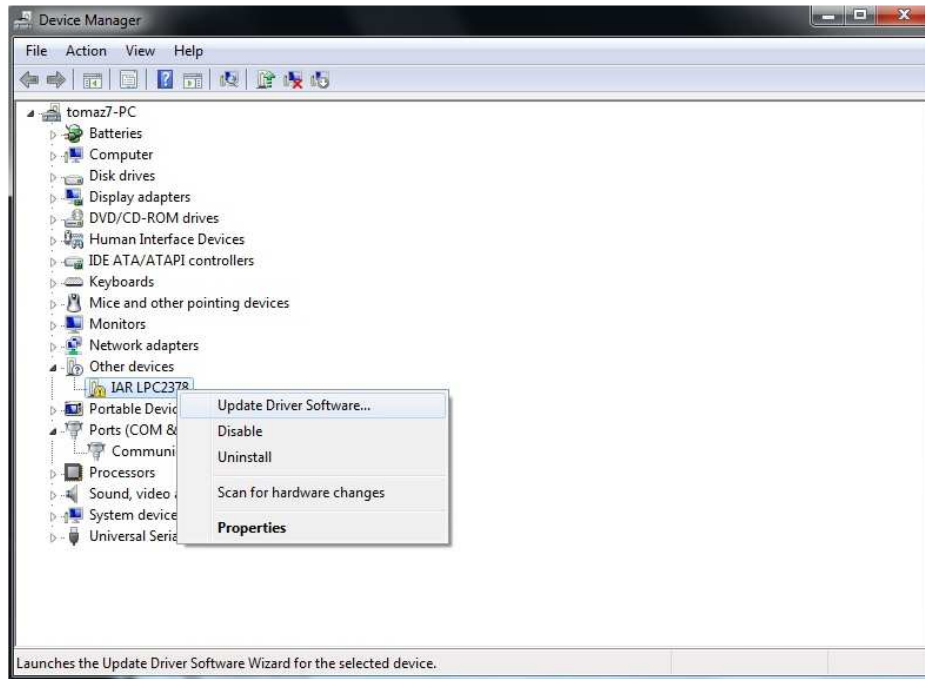


Figure 2: Right click to select update option.

Click on option **“Let me pick from a list of device driver on my computer”**.

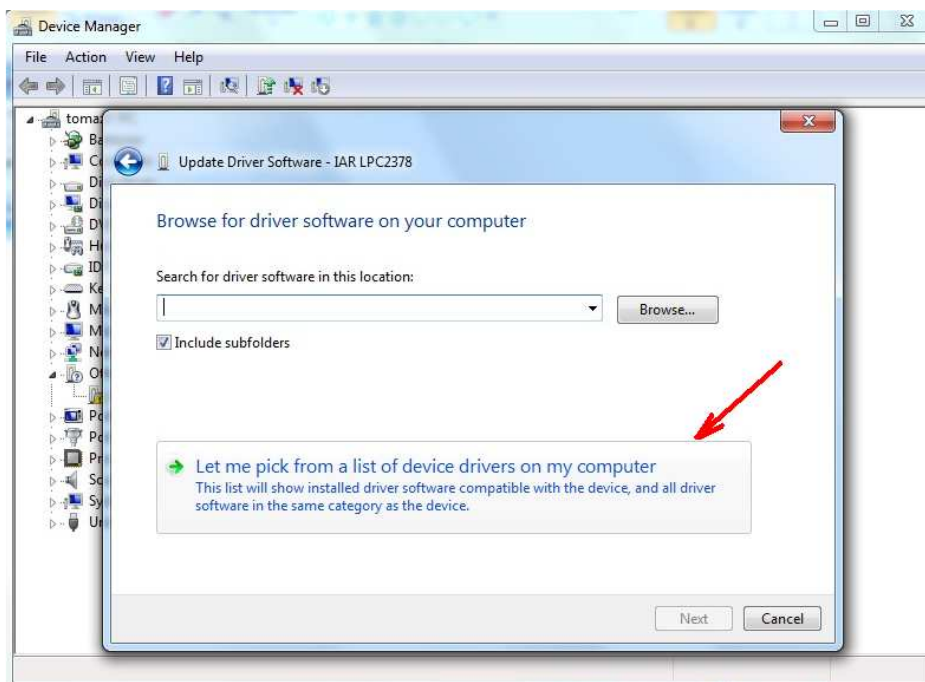


Figure 3: Select manual installation.

On this window select option **“Show All Devices”** and click **“Next”**.

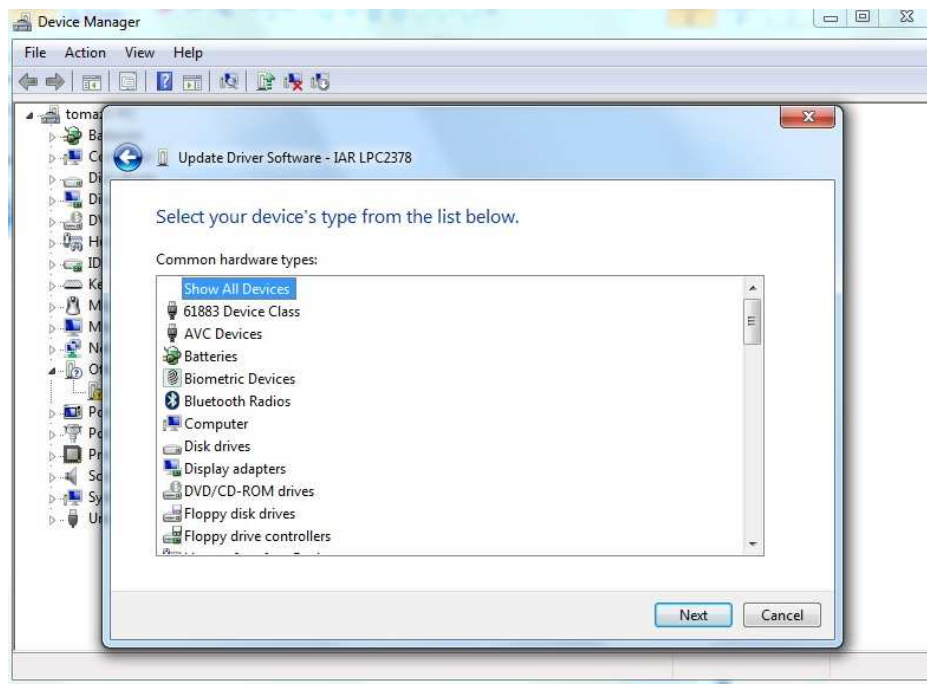


Figure 4: Select all devices.

In this window select option **“Have Disk”**.

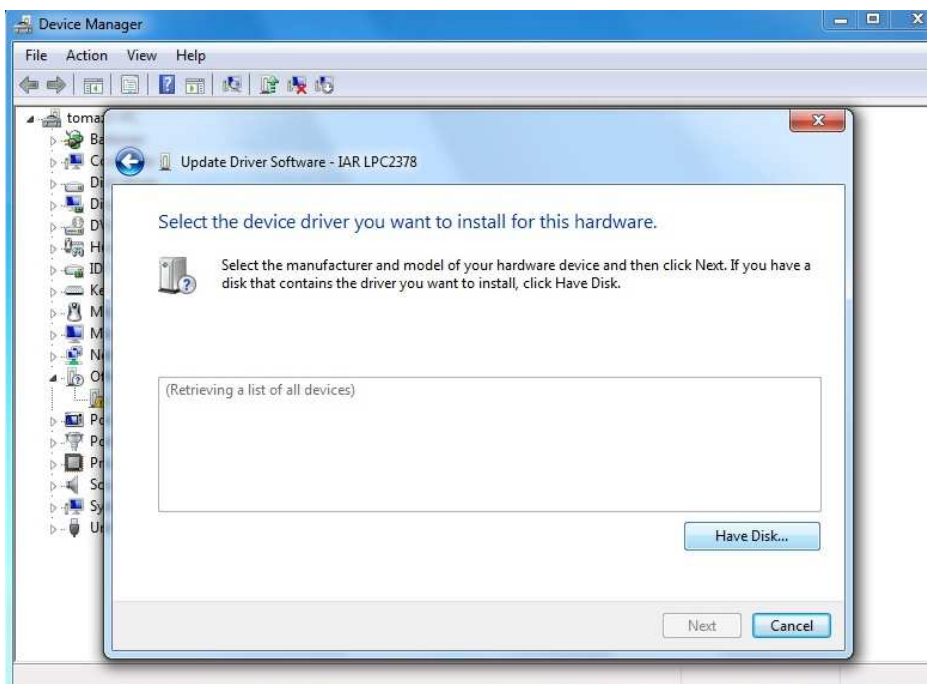


Figure 5: Select Have Disk option.

USB Driver Installation Manual

On this step the user must select appropriate installation file and click “OK”.

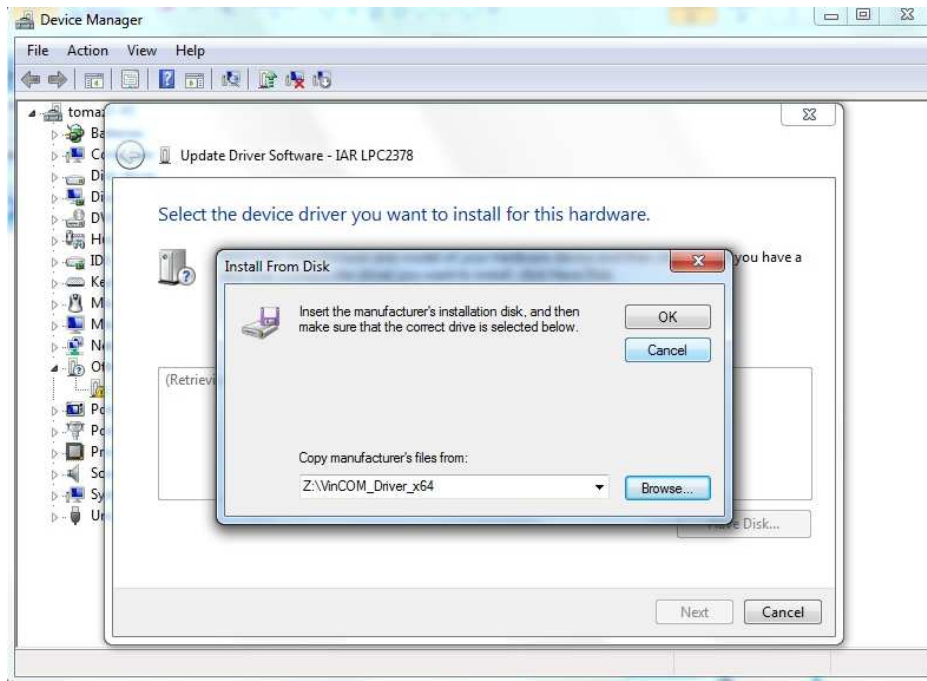


Figure 6: Select appropriate driver file.

After file is selected click “Next”.

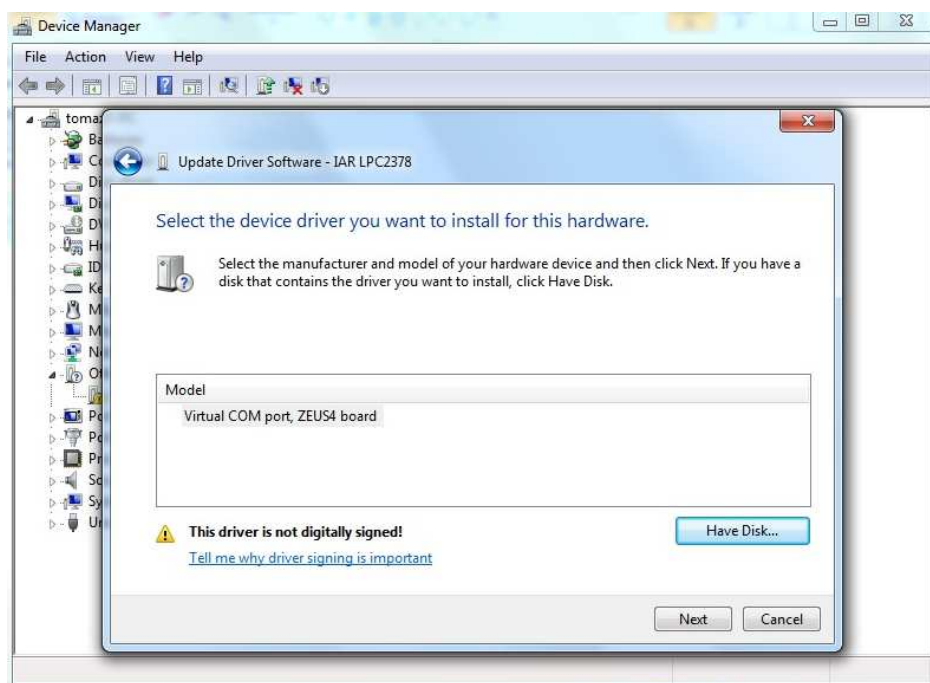


Figure 7: Driver file selected.

On this step user can receive warning messages. Click **“OK”**.

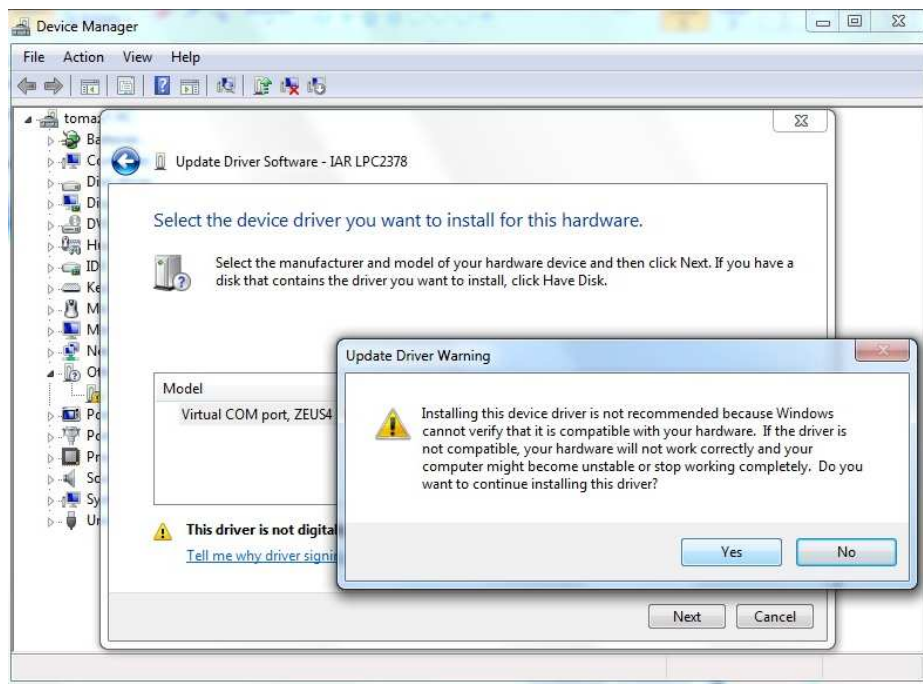


Figure 8: Warning message 1.

Warning message 2. Select options **“Install this driver software anyway”**.

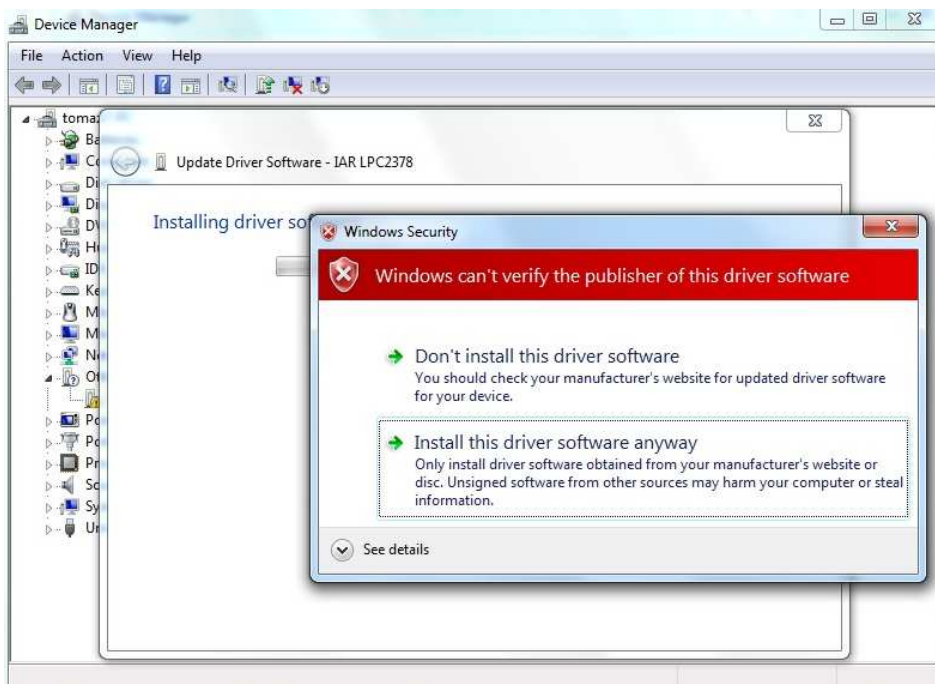


Figure 9: Warning message 2.

End of driver installation, click **“Close”**.

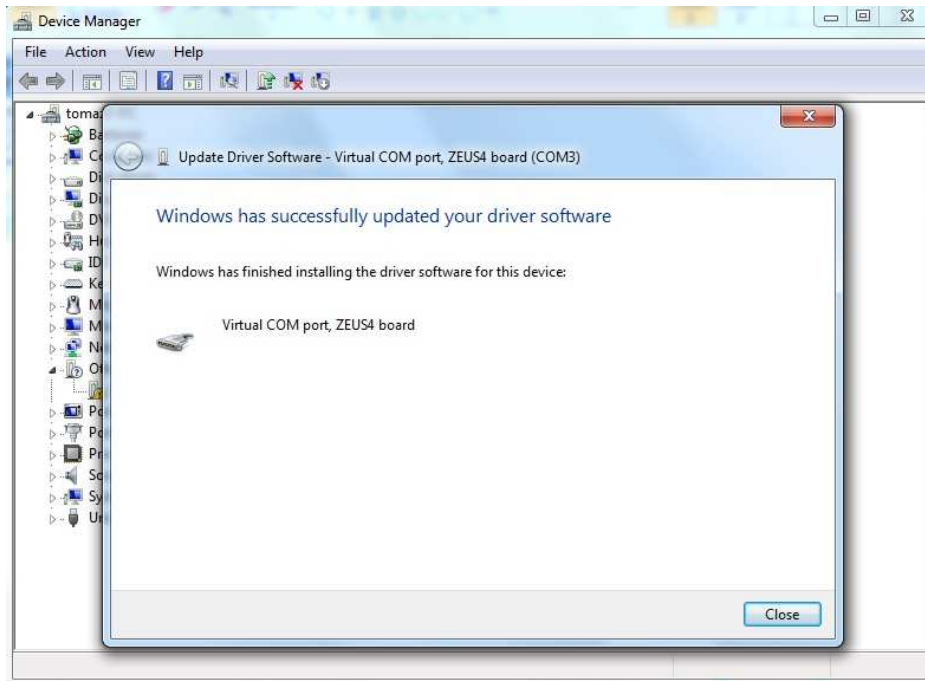


Figure 10: Driver installed.

End of driver installation.

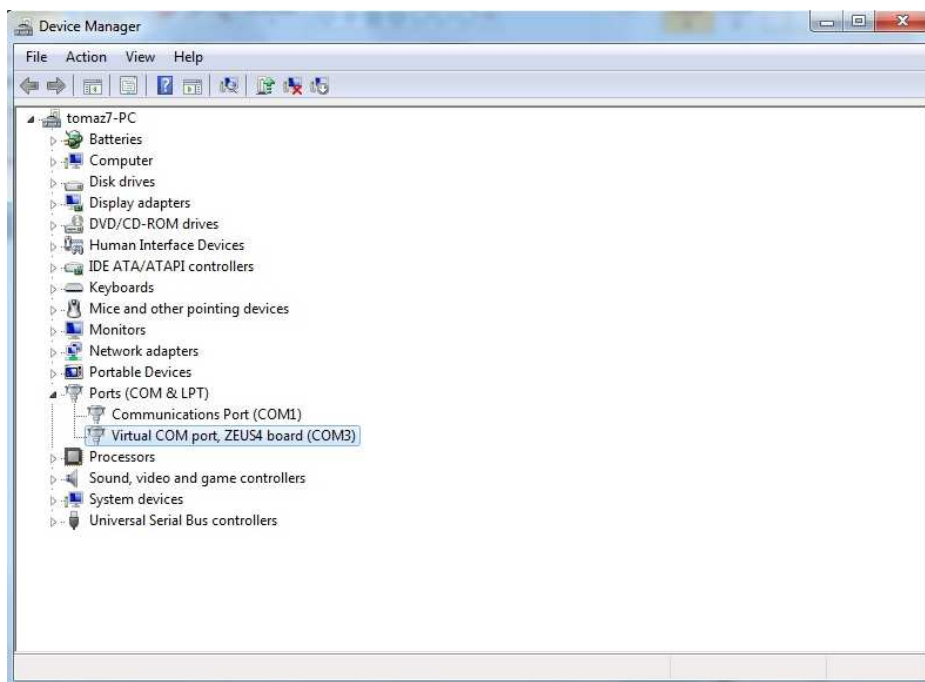


Figure 11: End look after successful driver installation.